



Connect. Set. Forget.

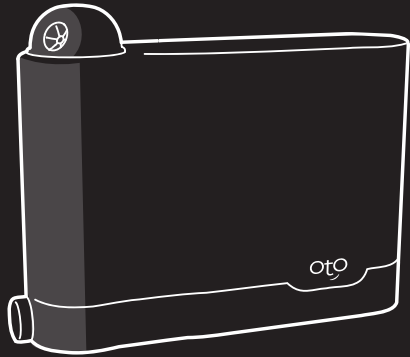
Your journey to effortless lawn care starts here.



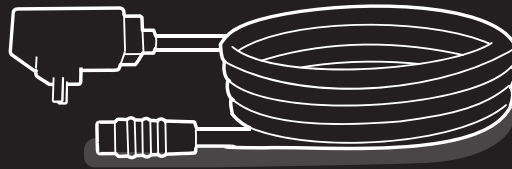
Scan for more support articles, photos, and videos!

support.otolawn.com

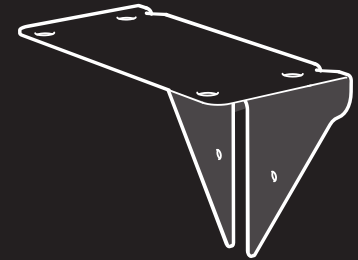
Contents



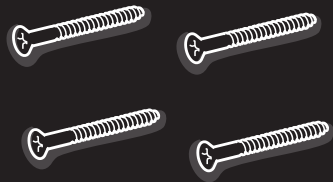
OtO device



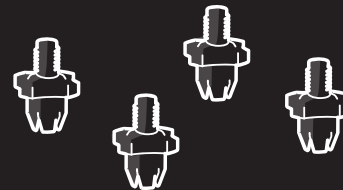
50 ft. power cable x 1



Mounting bracket x 1



Wood screws x 4



Thumb screws x 4

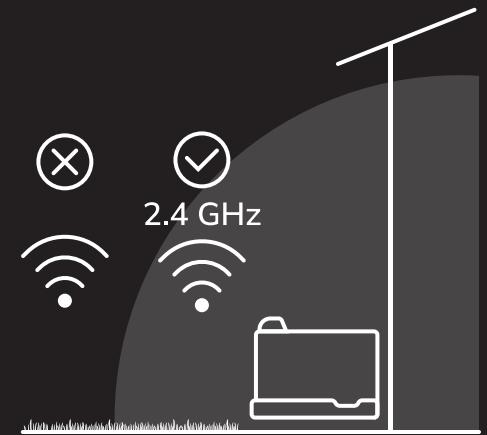
1. Before installing OtO

WiFi signal

OtO uses 2.4 GHz and requires constant access to a strong WiFi signal. Test the WiFi strength with the app before you place your device. Your phone's WiFi signal will be higher than what OtO will receive.



TIP: If you are using an iPhone, make sure it is connected to the same WiFi network as OtO.



Sunlight & power tips

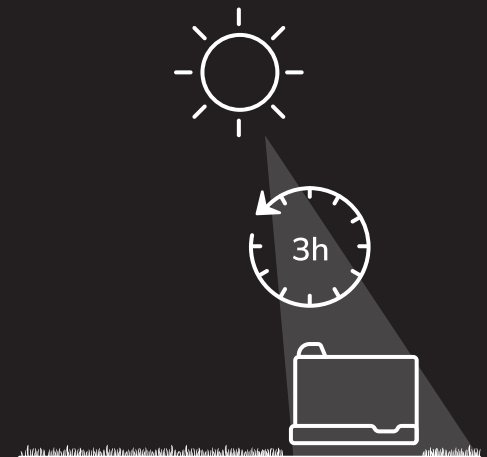
The on-board solar panel requires a least 3 hours per day of direct, unobstructed sunlight.

If your device's location does not receive enough sunlight, use the provided power cable and wall adapter as a permanent power source or as a boost when needed.



WARNING:

- Before connecting the power adapter to OtO, make sure both connectors are completely dry. Moisture caught between connectors during charging can cause pin corrosion and breakage.
- Keep the power connector capped when not in use. Leaving the pins exposed to water may cause irreversible power damage.



1. Before installing OtO (continued)

Hose requirements

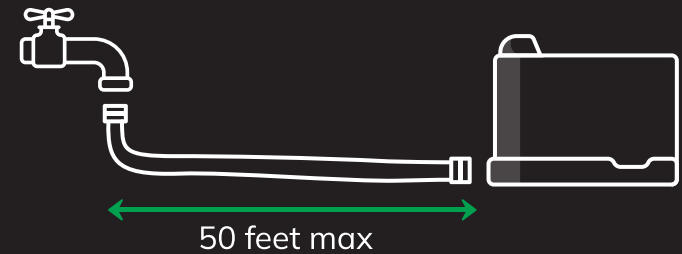
Ensure you have a compatible hose:

- Only use high-quality rubber hose
- 5/8" or 3/4" INNER diameter
- Do not use flex/expandable/light-duty hoses

Water pressure requirements

Ensure a full spray distance (30 feet) by minimizing pressure loss:

- Pressure at end of hose must be 50 PSI or greater
- Use as short of a hose as possible (max 50 feet)
- Avoid using hose connectors or splitters



WARNING:

- Use only brass or plastic couplings. Do not connect OtO to aluminum or steel hose ends (will cause corrosion)
- A pressurized hose may burst in high heat. Do not leave your hose pressurized and exposed to the sun
- Do not use any tools to secure the hose connection



2.5 ft



How to Estimate OtO's Reach

To estimate distance, walk outwards from OtO. 30 feet is approximately 12 walking steps. (average stride = 2.5 feet)

2. Add new device

1. Download the free OtO Lawn app



2. Launch the app and select: Add New Device
3. Follow the app's instructions to complete Wi-Fi setup



TIPS:

- *OtO only works with 2.4 GHz. If you have a dual-band router, make sure to connect to a separate 2.4 GHz band - not the 5 GHz band*
- *We recommend reaching out to your router or internet service provider (ISP) for guidance*
- *If you are having trouble connecting, double-check that your Wi-Fi password is correct*

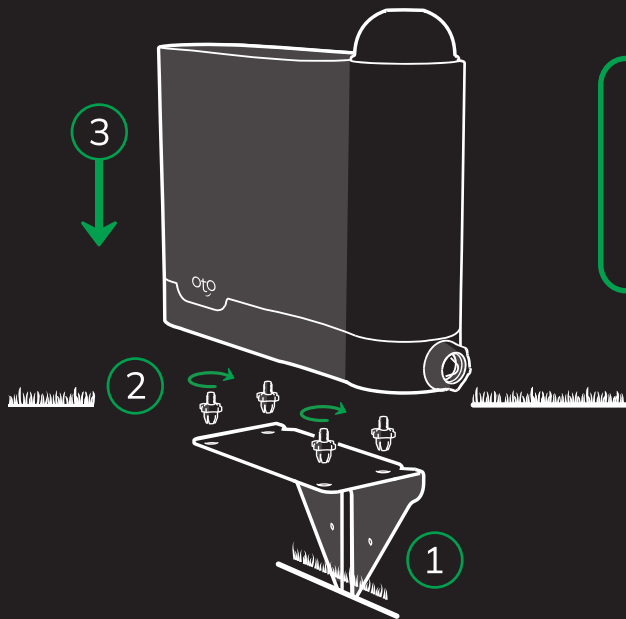
3. Installation



WARNING: Always secure OtO with the provided mounting bracket to prevent it from tipping over or causing inaccuracies in the designated zones. Please note that any damage caused by dropping the device is NOT COVERED BY WARRANTY.

Ground installation

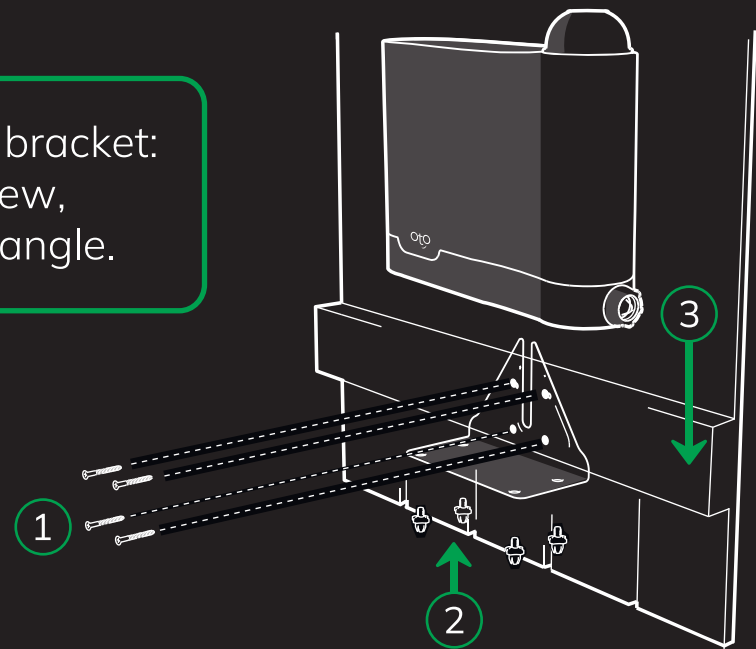
1. Push the mounting bracket into the ground until the top is flush with surface. Use a blunt piece of wood as a mallet, if necessary
2. Attach the four thumb screws to the device
3. Push the device's 'feet' into the bracket holes until all four are clicked into place



TIP: To remove from bracket: Pinch one thumb screw, and firmly pull at an angle.

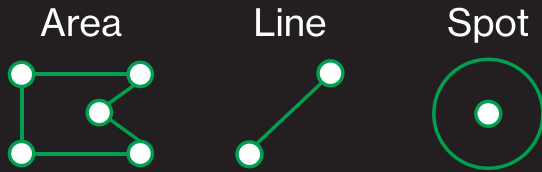
Fence/wall installation

1. Use the four included screws to secure the bracket into a wood fence
2. Pass the threads on the 4 thumb screws through the mounting bracket holes
3. Secure the thumb screws to the device



4. Create zones

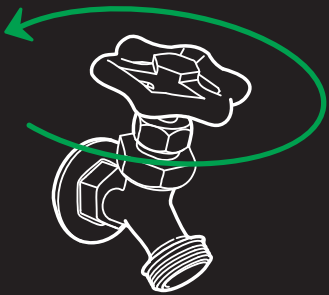
1. Use the OtO App to define zones, customize watering schedules, and apply solution. Create any combinations of these three types of zones:



2. Use the app's "Water Manually" function to test your zones

Troubleshooting water reach

If the device does not reach 30 feet, check the following:



- ✓ Water source must be fully open



- ✓ Ensure there are no kinks, bends, coils or leaks in the hose (see Hose Requirements in Step 1)



- ✓ Remove any connectors or splitters along the line



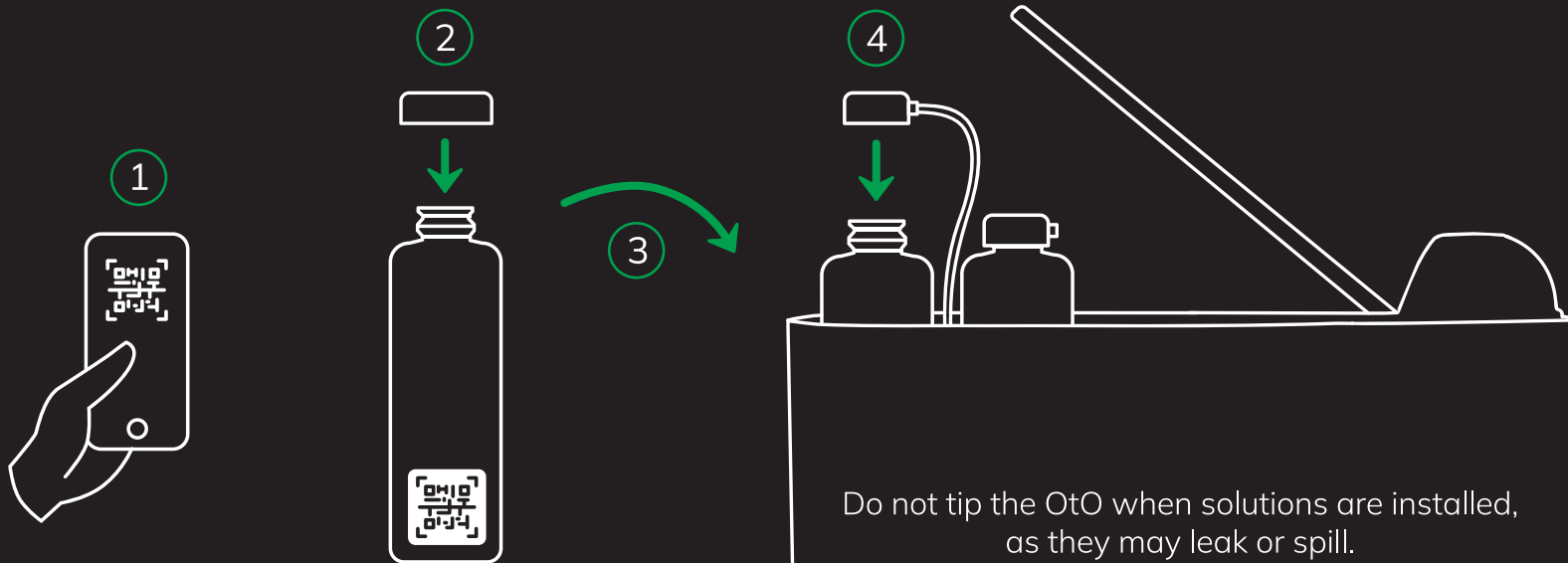
***TIP:** Learn how to improve your home's water pressure and other tips:*



5. Add solutions (optional)

Choose to enhance your OtO experience with optional solutions such as fertilizer. OtO will handle the automatic application for you, ensuring you never have to concern yourself with manual applications again.

1. On the **Device Overview** page, select the bay to fill
2. Scan the QR code on the bottle. The device now recognizes this bottle and you can assign it
3. Remove the cap and carefully insert the bottle into the corresponding bay
4. Firmly connect the feedcap



Refills

To order more solutions, visit otolawn.com

6. Maintenance

- Keep OtO clean using a damp cloth. Do not use abrasive chemicals. Keep the solar panel clean and unobstructed
- Periodically throughout the season check the hose gasket filter is clean

❄️ How to put OtO away for the winter.

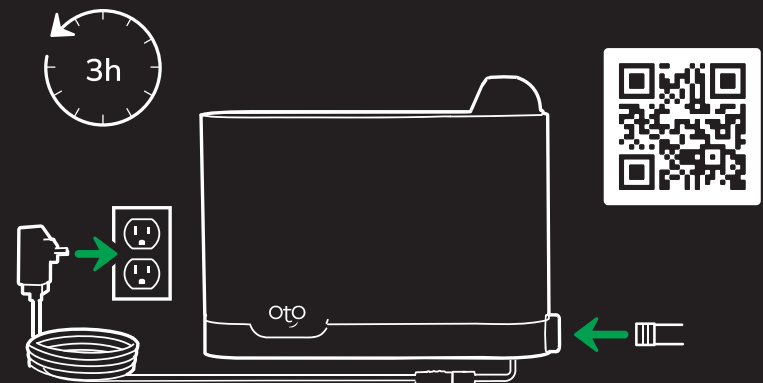
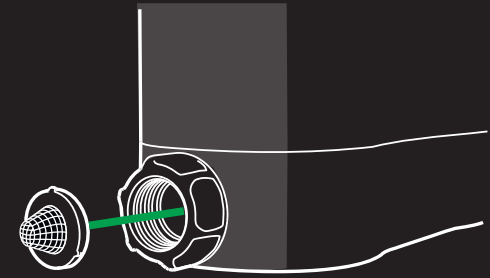
1. Protect OtO's battery life by turning on Winter Mode in the app
2. Remove any solution bottles. Cap them if solution is remaining
3. Turn off water source and then drain the device completely of water
4. Store indoors where it will not freeze



WARNING: Do not leave or operate the device in freezing temperatures

☀️ How to reinstall OtO during the spring.

1. Charge OtO for a few hours using the power cable
2. Take OtO out of Winter Mode using the app
3. Re-install or double check your hoses and hose routing
4. Ensure there is no debris in any of the hose connections
5. Test your zones using the "Water Manually" function in the app



Warranty & legal

For Warranty information, visit <https://otolawn.com/pages/warranty>

For battery recycling, visit call2recycle.org or call **1-800-822-8837**

For self-help, visit support.otolawn.com. If you still need support, reach out to us via one of the following contact methods:

- Select “Report Issues” option in the app
- 1-833-473-3617
- care@otolawn.com



WARNING: *To prevent contamination of your drinking water, ensure that the faucet connected to OtO is equipped with a backflow device. Government regulations determine the specific type and maintenance requirements of the backflow device needed when connecting a device like OtO to the water supply. Regulations may vary by municipality, so it's essential to install and maintain the appropriate backflow device for your area. OtO is not liable for any damage or harm resulting from failure to comply with these requirements*

NOTE: This equipment has been tested and found to comply with the limits for a Class B digital device, pursuant to part 15 of the FCC Rules. These limits are designed to provide reasonable protection against harmful interference in a residential installation. This equipment generates, uses and can radiate radio frequency energy and, if not installed and used in accordance with the instructions, may cause harmful interference to radio communications. However, there is no guarantee that interference will not occur in a particular installation. If this equipment does cause harmful interference to radio or television reception, which can be determined by turning the equipment off and on, the user is encouraged to try to correct the interference by one or more of the following measures: —Reorient or relocate the receiving antenna. —Increase the separation between the equipment and receiver. —Connect the equipment into an outlet on a circuit different from that to which the receiver is connected. —Consult the dealer or an experienced radio/TV technician for help

© 2024 OtO Lawn.

All rights reserved. OtO and the OtO design are trademarks of OtO Inc.

Information subject to change without notice. [0294-A]